

HEAVY DUTY TRAY (HDT)

Product pusher for
large and heavy products

HEAVY DUTY TRAY (HDT) – FOR LARGE AND HEAVY PRODUCTS

A HEAD START IN SALES

The visibility of products significantly influences consumers' purchasing decisions. Well-managed shelves make it easy for customers to find the right product and its appropriate price. Clear and well-structured shelf management is therefore essential for increasing impulse buying and consequently sales. At the same time, the time needed to tidy the shelves is reduced and the costs for shelf maintenance are lowered.

« Better product visibility increases sales. »

GOOD SHELF MANAGEMENT

FROM THE RETAILER'S PERSPECTIVE:

- **Flexible and quick adjustments** after layout changes
- **Early recognition** of sold-out products
- **Full product** presentation through product pushers
- **Reduction of labour** costs when products are at the front of the shelf

FROM THE CONSUMER'S PERSPECTIVE:

- **Appealing and well-managed presentation** of products
- Matching **product and price labelling**
- Products are **easy to reach** on the shelves

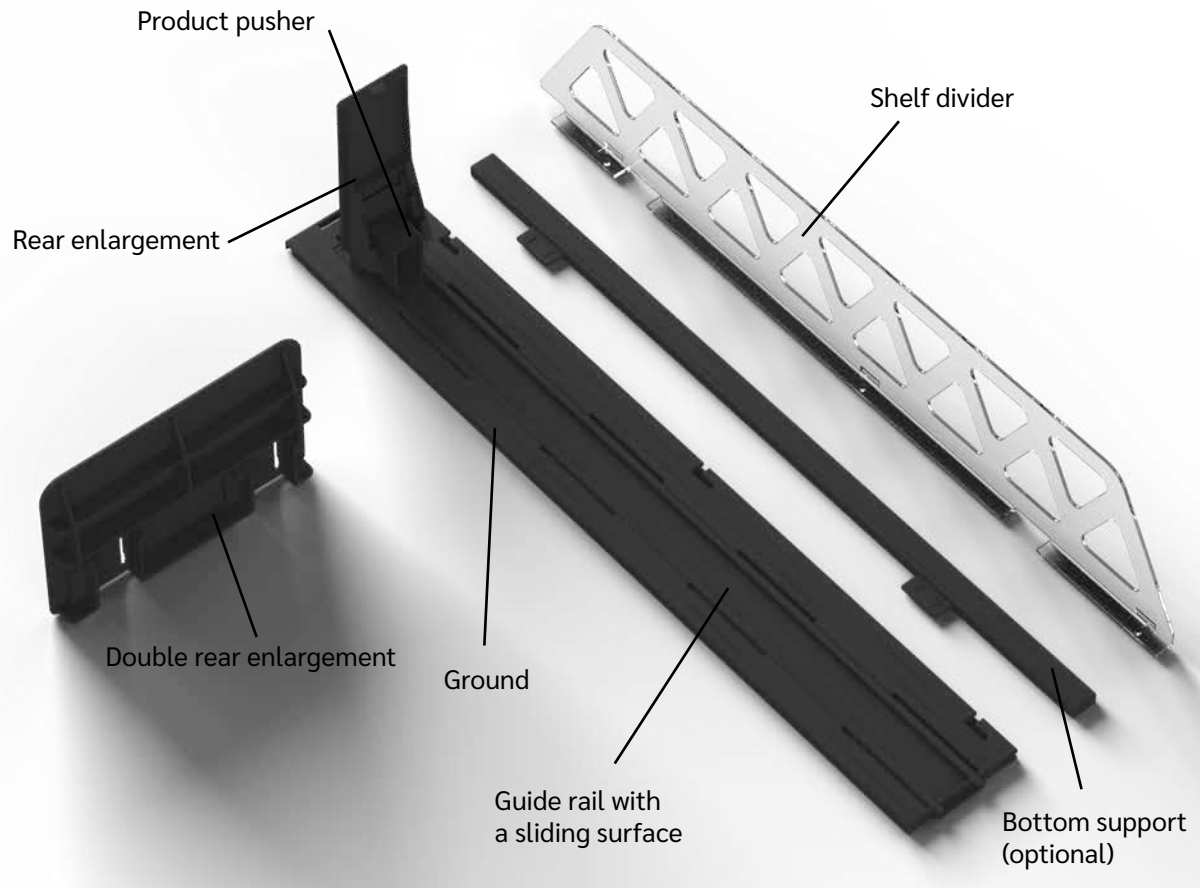
BENEFITS OF HEAVY DUTY TRAY (HDT)

- Guide rail with a sliding surface
- Sturdy design with integrated, strengthened front anchor
- More stability with supporting strips
- Quick and easy layout design
- Available with or without "Slow Feed"
- Individually adjustable for all products from a width of 80 mm
- Flexible using, thanks to modular design
- Quick and easy relocation of the trays by lifting
- Fastening on standard t-profile rails

SLOW FEED – THE GENTLE PUSHER

This pusher variation has a special mechanism that adjusts the force needed to push products gently and carefully to the front of the shelf, ensuring that products do not fall to the front when a package is removed. The Slow Feed also makes it easier to restock the shelves. The product pusher can first be pushed to the back and the resulting delay can be used to place products on the shelf with both hands.

HEAVY DUTY TRAY (HDT) – MODULAR CONSTRUCTION

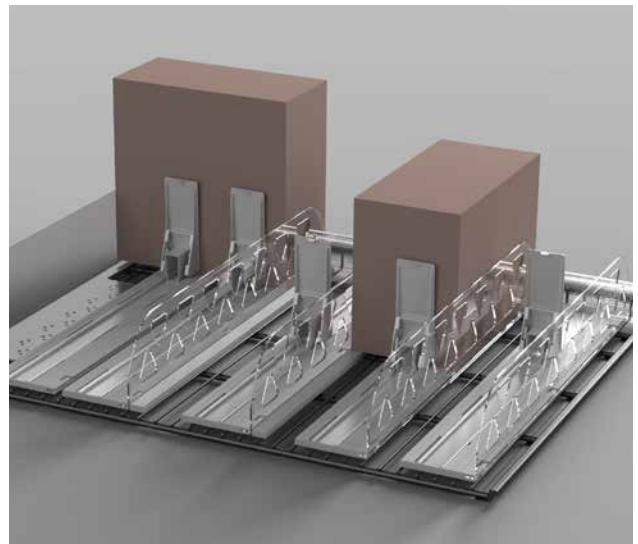


TECHNICAL SPECIFICATIONS

Dimensions (L x W x H)	Colors	Spring force
550 x 82 x 105 mm	■ ■	10, 14 and 18 N
550 x 100 x 105mm (incl. bottom support)	■ ■	10, 14 and 18 N

FLEXIBLE USING

The modular structure of the Heavy Duty Tray allows the individual components to be combined as required. One HDT is required for products over 80 mm wide and two HDTs for products over 160 mm wide. We deliver the Heavy Duty Tray standardly with a rear enlargement (50x130 mm). For heavy or wide goods, an additional double rear enlargement can optionally be ordered.



HEAVY DUTY TRAY (HDT) – RANGES OF APPLICATION

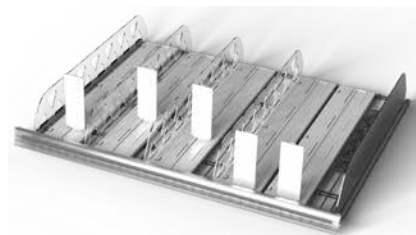


HEAVY DUTY TRAY (HDT) – PUSHERS



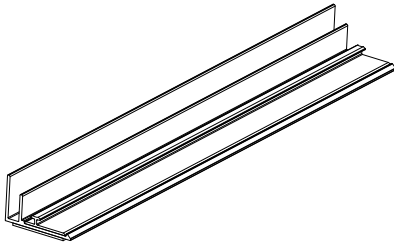
HEAVY DUTY TRAY (HDT)

Pusher system with a length of 550 mm for heavy, large products, starting with a width of 80 mm. Especially suitable for areas such as cooling, refrigeration, food, non-food. Modular construction, the individual components can be combined according to customer requirements. The fixation is made on a t-rail. Optionally available as slow feed.



48100-7016/550/10N	Anthracite grey, 10 N
48100-7016/550/14N	Anthracite grey, 14 N
48100-7016/550/18N	Anthracite grey, 18 N
48100-03/550/10N	Grey, 10 N
48100-03/550/14N	Grey, 14 N
48100-03/550/18N	Grey, 18 N

HEAVY DUTY TRAY (HDT) – ACCESSORIES



ALU FRONT RAIL WITH T-PROFILE FOR 5MM ACRYLIC FRONTS

For screwing. To hold acrylic fronts with 5 mm thickness, with glued PRT-20 profile rail, anodized.

45710-91-B/0998 Shelf length 1000 mm

45710-91-B/1248 Shelf length 1250 mm

ACRYLIC FRONT

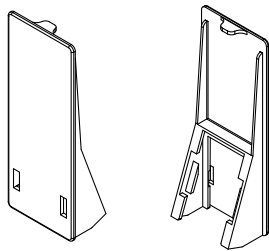
Suitable for the alu front rail on Heavy Duty Tray .

48630-00/0998/05 998x80x5 mm

48632-00/0998/05 998x100x5 mm

48630-00/1248/05 1248x80x5 mm

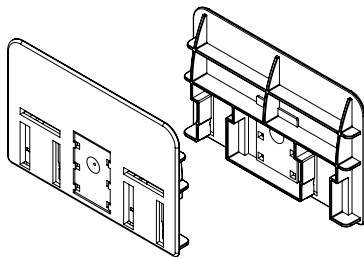
48632-00/1248/05 1248x100x3 mm



REAR ENLARGEMENT INCLINED/VERTICAL

To be clicked onto the pusher's housing (width 40 mm), grey. To be used in inclined or vertical position. Width/height 50x130 mm.

48563-03

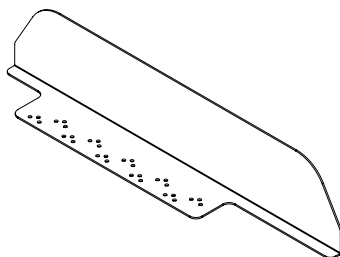
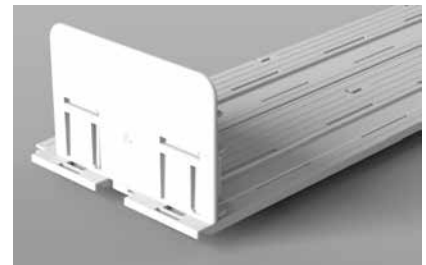


DOUBLE REAR ENLARGEMENT

To be clicked onto the pusher's housing of two pushers (width 40 mm). To be used in vertical position. Width/height 178x115 mm.

48550-0716 Anthracite grey

48550-03 Gray



L-SHELF DIVIDER WITH MOUNTING KIT

End piece for the last product pusher on the shelf, if there is no structural limitations. The shelf divider will be screwed by using the mounting kit.

90-45890-00/KL



we.promote.selling.



Brochure Heavy Duty Tray (HDT) | V.1 | 01/2020
© Oechsle Display-Systeme GmbH, 2020



Oechsle Display Systeme GmbH
Rudolf-Wanzl-Straße 13-15
89340 Leipheim, Germany

Phone : +49 8221 2798-0
Fax: +49 8221 2798-27

E-mail: info@oechsle.de
Web: www.oechsle.de